



# DIGITAL PRACTICE: DATA DRIVEN DESIGN

Leading the way in technology advancements for architecture and design



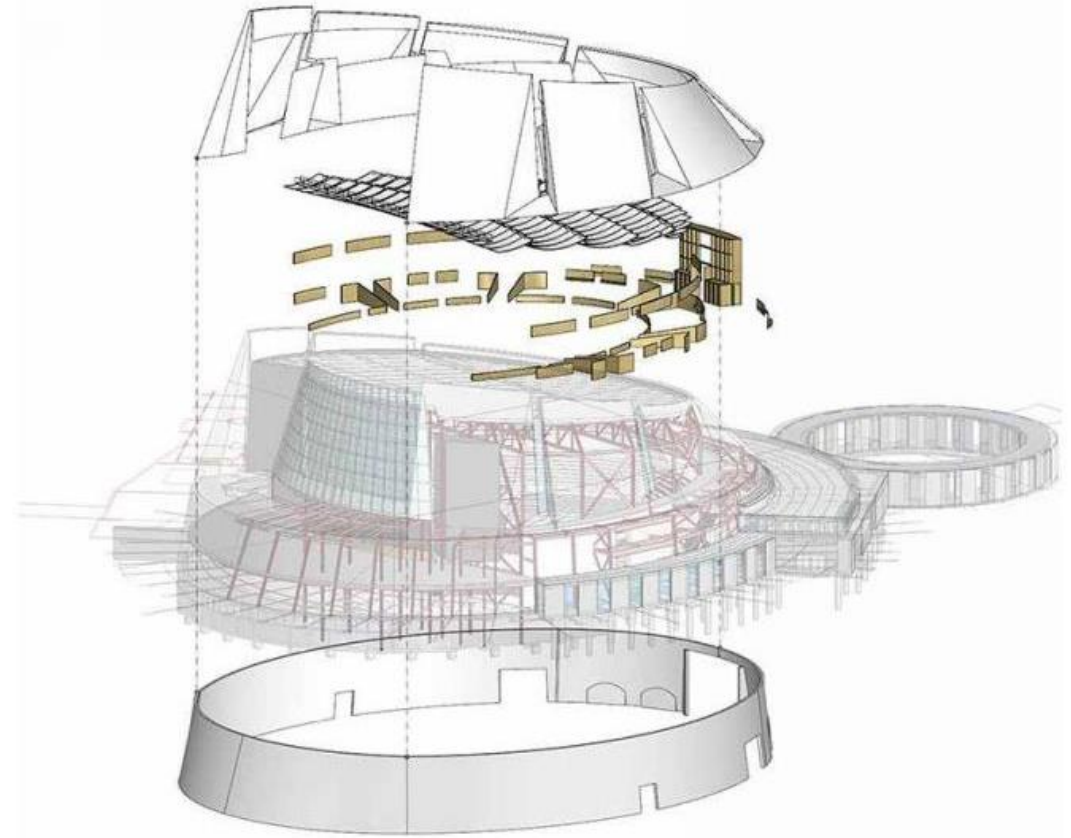
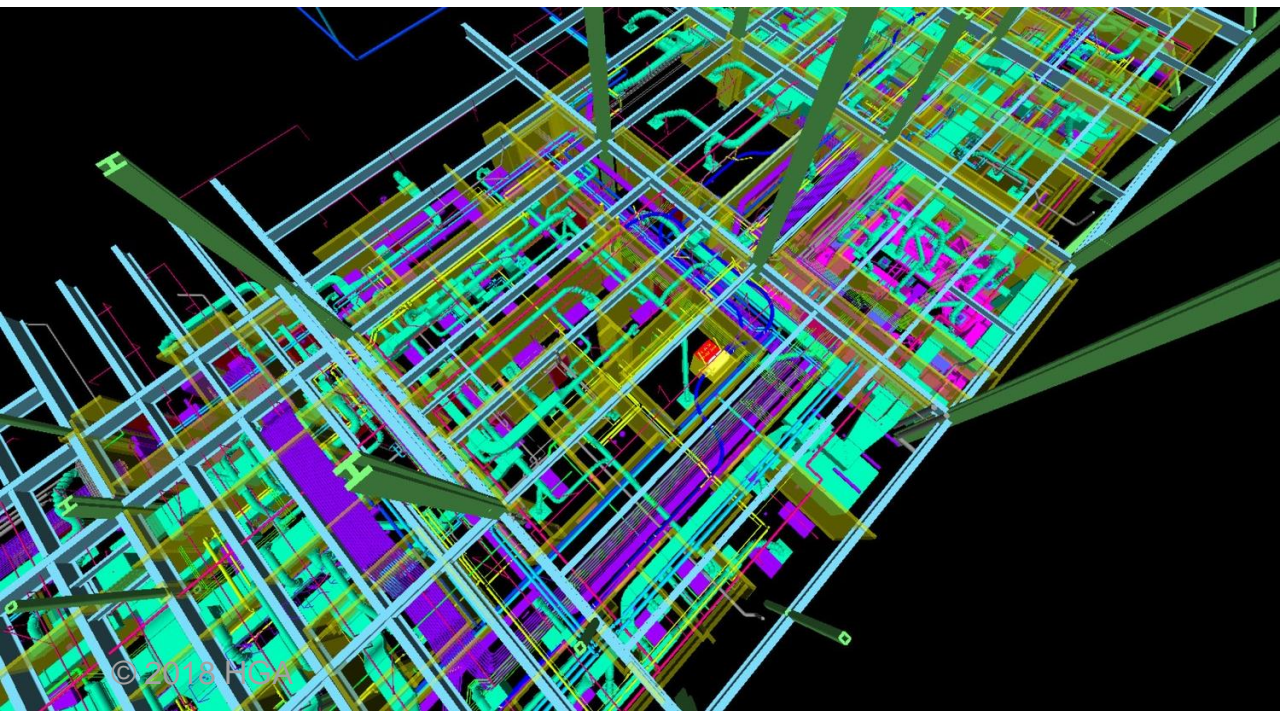
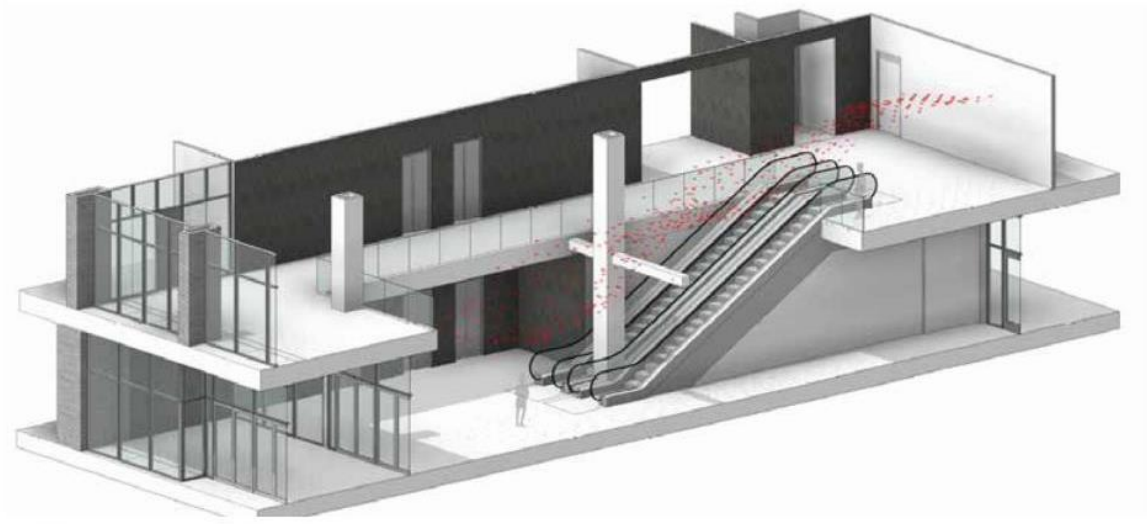
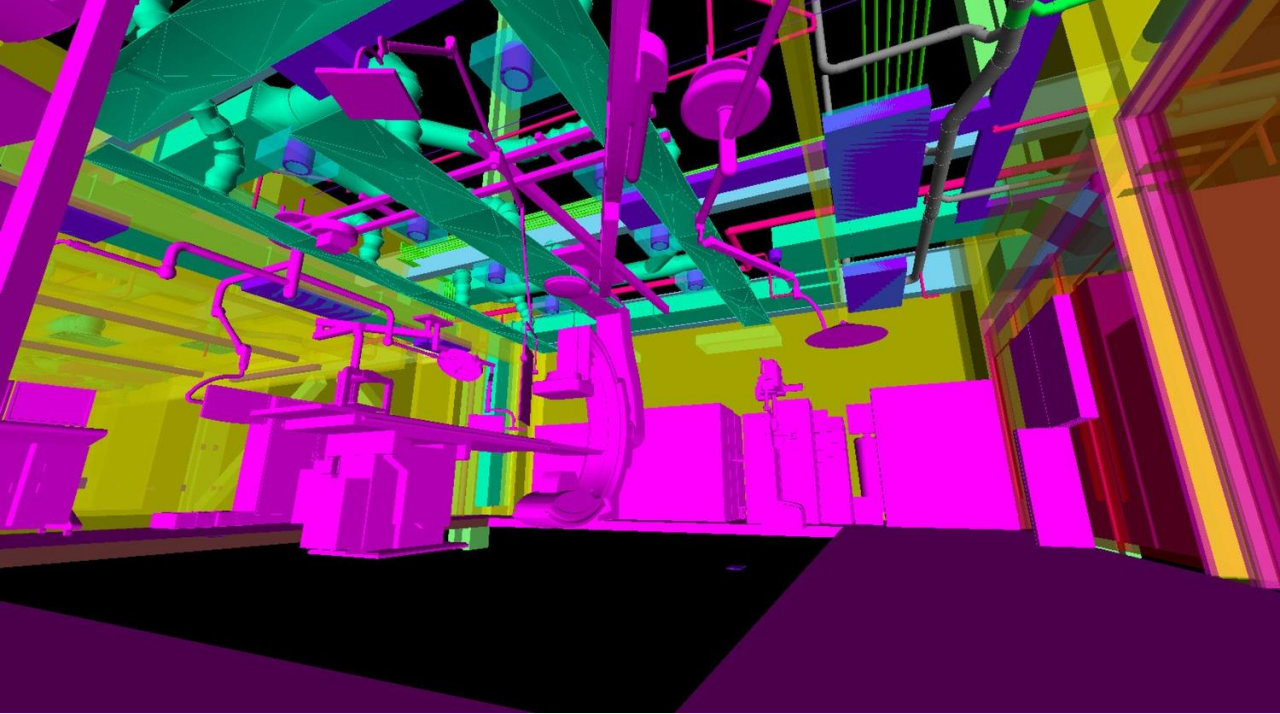
H G A

## BUILDING INFORMATION MODELING (BIM)

We use parametric modeling tools to help populate a model that will assist the team in analyzing existing space based on our knowledge and client database. Revit supports these parameters as a data rich modeling program. It supports concurrent design options, plays well with building owner and client software programs and inherently produces diagrams and 3D graphics.

## VISUALIZATION (VIRTUAL REALITY)

We utilize VR in our process to help clients experience physical space and explore design options. This prescient tool provides clarity to the design, resulting in better outcomes for clients and occupants. When working in a model, the user is able to make correct assumptions about scale and distances of objects and the virtual environment.

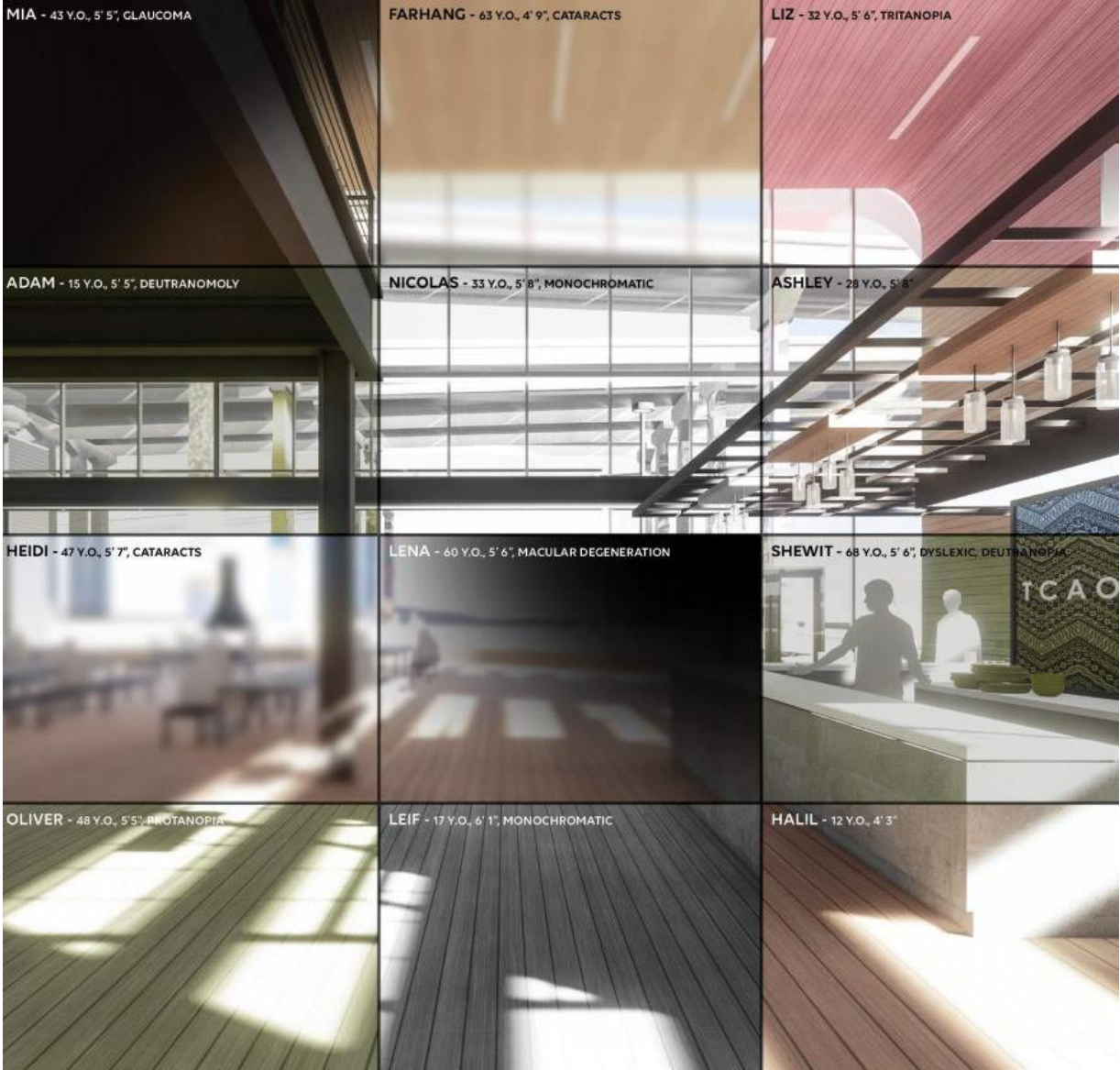
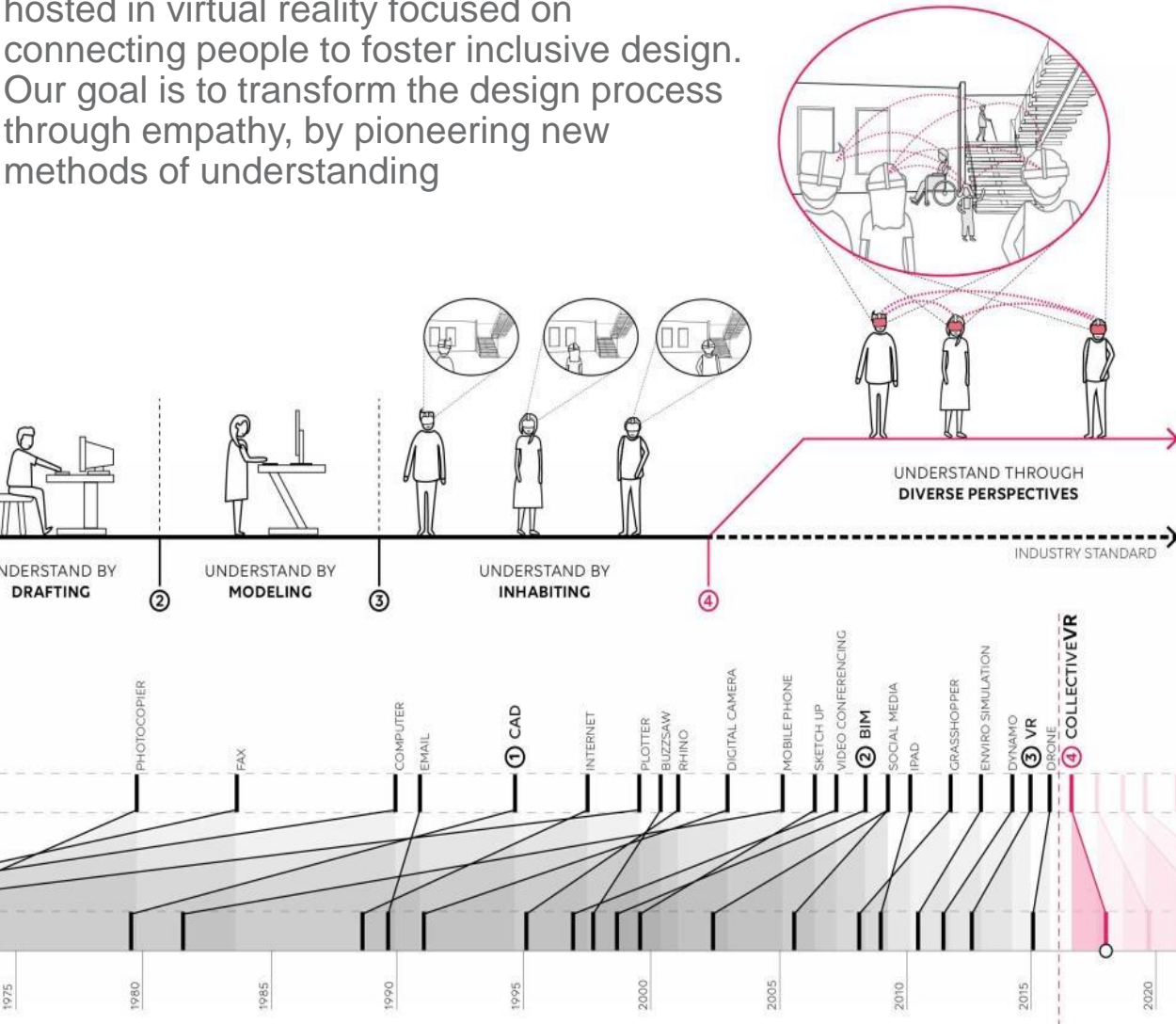




<https://roundme.com/tour/134213/view/339079>

© 2018 HGA

COLLECTIVEVR is a collaboration platform hosted in virtual reality focused on connecting people to foster inclusive design. Our goal is to transform the design process through empathy, by pioneering new methods of understanding





<https://www.youtube.com/watch?v=oDWLAHTZT7s>

© 2018 HGA

HGA

Thank You

HGA